



GAT MONTHLY MEMBERSHIP PROGRESS REPORT

Results as of: 10/31/2021

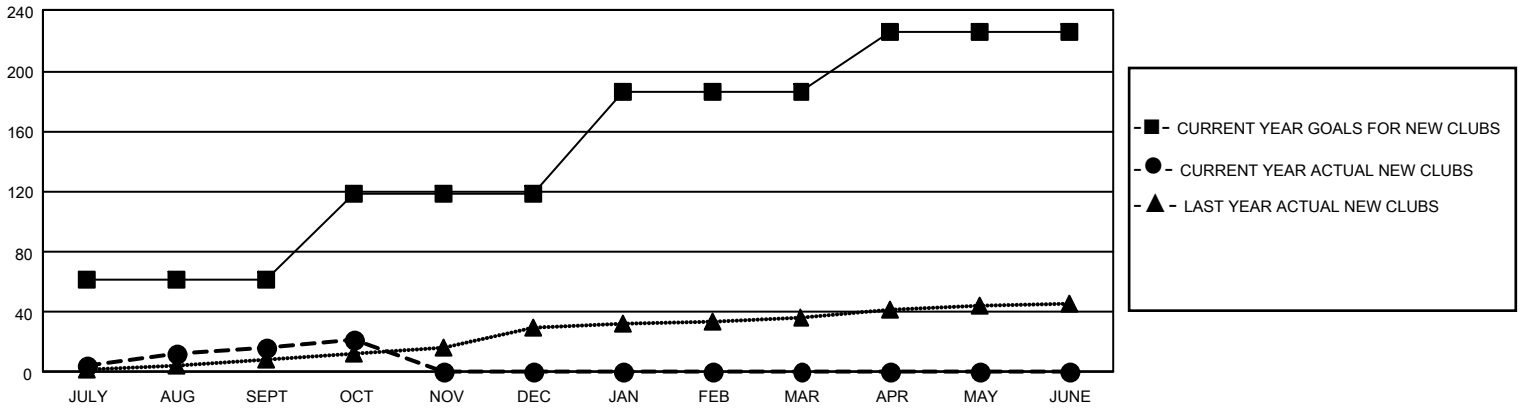
GAT Constitutional Area 5 - Korea

REPORT DOES NOT INCLUDE CLUBS IN UNDISTRICTED AREAS.

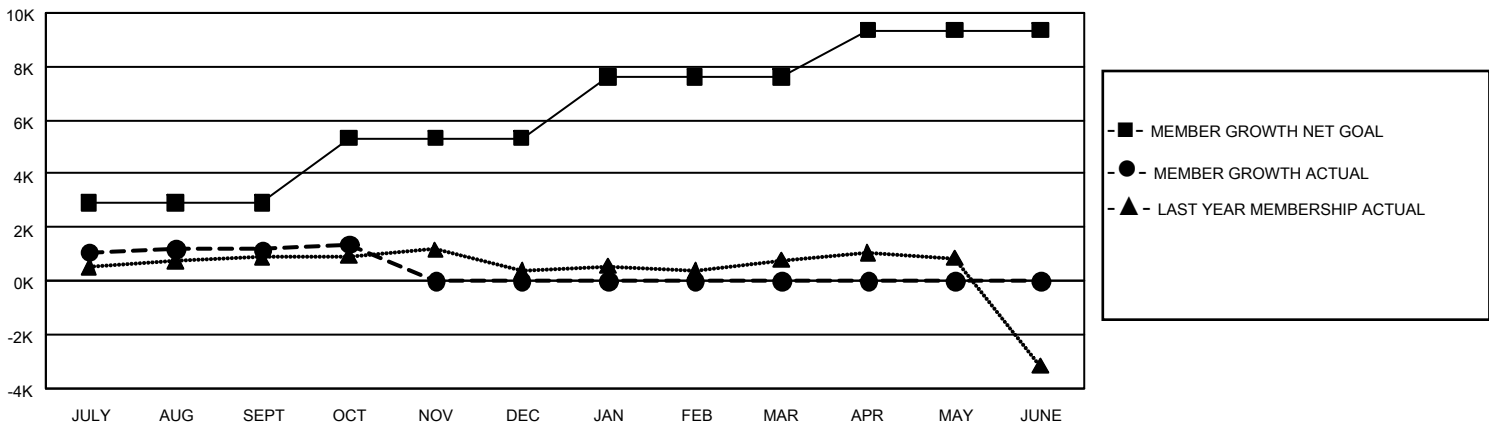
Clubs			
RESULTS FOR 2021-2022			
QUARTER	NEW CLUB GOAL	NEW CLUBS	DROPPED CLUBS
JULY/AUG/SEPT	183	16	27
OCT/NOV/DEC	174	6	0
JAN/FEB/MAR	201	0	0
APR/MAY/JUNE	120	0	0

Members			
RESULTS FOR 2021-2022			
QUARTER	MEMBER GROWTH NET GOAL	MEMBER GROWTH ACTUAL	DROPPED MEMBERS ACTUAL (including transfers)
JULY/AUG/SEPT	2925	3,743	2,365
OCT/NOV/DEC	2400	642	421
JAN/FEB/MAR	2293	0	0
APR/MAY/JUNE	1738	0	0

GOALS AND ACTUAL NEW CLUBS CUMULATIVE



GOALS AND ACTUAL MEMBERS CUMULATIVE



DROPPED CLUBS: 27	1,000 CLUBS OF 2,061 ADDED 1 OR MORE NEW MEMBERS	GENDER DISTRIBUTION	
		MALE 55,586 (74.74%) FEMALE 18,789 (25.26%) NON BINARY 0 (0.00%) PREFER NOT TO ANSWER 0 (0.00%)	
DROPPED MEMBERS		CLICK HERE FOR CUMULATIVE MEMBERSHIP DATA	
DECEASED 70 CLUB CANCELLED 278 OTHER 2,438 TOTAL 2,786	TOTAL FAMILY UNIT MEMBERS 5,875 FAMILY MEMBERS PAYING HALF DUES 3,428		